

The St. Marylebone Church of England Bridge School



Home/School Agreement

2016 / 17



HOME / SCHOOL AGREEMENT

MISSION STATEMENT

The St. Marylebone CE Bridge School aims to achieve the highest standards of effort, behaviour and commitment so that all pupils may realise their full potential. The Bridge School will create an environment in which our pupils can achieve their maximum potential, gain independence and social awareness so that they can, beyond school, enjoy and participate in the world of work and adult society along with their mainstream peers.



The responsibilities of the school are to:

- Make sure that we promote our 'Open Door' principle at all times.
- Deliver a broad, balanced, challenging and enjoyable curriculum as required by the DfE in accordance with the Mission Statement.
- Make sure that all our pupils achieve their full potential and their achievements are celebrated.
- Contact home if there are concerns over attendance, punctuality, behaviour or the welfare of the child.
- Promote equality of opportunity for all connected with the school regardless of race, culture, gender, religious belief, class, physical ability or sexuality.
- Carry out the statutory Annual Review of each child's statement of Special Educational Needs or EHC plan and meet the reporting and assessment requirements.
- Arrange Parents' Evenings during which progress will be discussed.
- Keep parents/carers informed of school events.
- Make all school policies available for parents/carers to consult.
- Make sure that all safeguarding policies and procedures are adhered to and kept up to date.

The school cannot take responsibility for personal items or money that are lost at school.

Dominic Sunderland, Head of School.



The responsibilities of Parents/Carers are to:

- Be confident in using the school's 'Open Door' principle.
- Make sure that their child arrives at school punctually or, if transport is provided by LA, make sure they are on the bus/taxi for the due time.
- Make sure that the pupil is in correct uniform.
- Make sure that their child attends school during term time unless she or he is unwell.
- Inform the school of illness by telephone on the first day of absence and explain all absence with a letter on the day their child returns to school.
- Make sure that all family holidays are taken during official school holidays.
- Let their child's teacher know of any changes or events at home which could affect their progress at school.
- Co-operate with the school by supporting the decisions and policies including the School Behaviour Policy.
- Explain to their child that they must value and respect all other pupils and all those who work in the school.
- Support their child's attendance at assemblies, Church services and other special services.
- Support the school by being actively involved in their pupil's education and progress.
- Support their child in achieving his or her full potential at school.
- Attend Annual Reviews and Parents' Evenings.
- Take part in 'Parent Workshops' and other programmes developed by the school as appropriate. This aims to help develop support systems for parents/carers and build rapport between school and parents/carers, which is very highly valued by the school

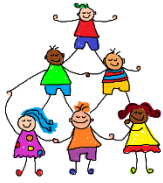
Parent/Carer Agreement

I agree with the terms of admission and agree to support the policies of the school.

Name of pupil:.....
(BLOCK CAPITALS PLEASE)

Name of parent/carer:
(BLOCK CAPITALS PLEASE)

Signature of parent/carer: Date:.....



Pupils' responsibilities



- I will arrive at school on time every day and be on time to my lessons.
- I will follow the 'Learner's Code' and all school rules and do as I am told by members of staff.
- I will be polite, kind and considerate and will treat all members of the school community and visitors with respect.



- I will arrive at school in the correct uniform, with the correct books and equipment for that day.
- I will try my hardest at all times by completing work in lessons, by doing all my homework to the best of my ability and asking for help if I need it.



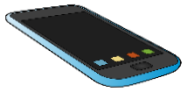
Pupil Agreement

These are my school responsibilities. I agree with them.

- I will pass on any letters or other messages between home and school.
- I will wear the necessary protective clothing for PE, Art, Design and Technology and Food Technology lessons or any other subjects as and when needed.



- I will leave all valuables at home, large amounts of money or any items not allowed onto school premises e.g. Tip-Ex, glass bottles, expensive electrical items, cigarettes, alcohol or drugs.



- I will switch off my mobile phone and keep it in my bag at all times during school.

- I will not smoke, drink alcohol, gamble or take drugs on or near the school premises, on the journey to or from school or when on a school trip.

Name of pupil:

(BLOCK CAPITALS PLEASE)

Signature of pupil: Date:



School Uniform

All pupils must wear well-groomed full uniform at all times. Ordering information is included in the welcome pack and online.

Indoor wear – Girls

- A plain bottle green skirt (to be at least knee length)
- White open-necked blouse (long sleeved or short sleeved) **Not a T-shirt**
- A v-necked bottle green pullover or sweatshirt with school logo
- Black/white knee-length or ankle socks
- Plain black /bottle green tights
- Flat-heeled black shoes of leather appearance. Heels must be no greater than 2.5cm in height. **No canvas shoes, no boots or shoes above the ankle. Trainers must not be worn except for PE or with special permission**

Outdoor wear – Girls and Boys

- A bottle green school blazer with school logo (**optional**)
- A black, white or green scarf or a green and gold school scarf (**optional**)
- A plain bottle green or black top coat.

Art – Girls and Boys

- An old shirt to use as an overall
This should not be denim or leather

Other uniform information

- Only one pair of stud earrings may be worn in the lobe of the ear. No other piercings are permitted.
- A necklace with a religious symbol may be worn inside clothing. It should not be displayed outside clothing. Students may wear a watch. No other jewellery permitted.
- Long hair may be tied back with black, white or green hair bands. No other bands should be worn.
- If head scarves are worn for religious purposes they must be plain black or bottle green.
- Hats of any description are not to be worn in or around the school.

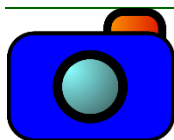
Indoor wear – Boys

- Grey trousers
 - White shirt (long sleeved or short sleeved)
 - Green sweatshirt with the school logo
 - Plain black/white socks. **Not patterned**
- Black shoes of leather appearance.
Trainers, canvas shoes or boots of any description are not permitted except for PE or with special permission

Physical Education wear – Girls and Boys

- Plain white polo shirt with school logo
- Green PE tracksuit bottoms
- Green PE sweatshirt with school logo
- Black shorts with school logo (**optional**)
- Plain black footless leggings for girls (**optional**)
- White socks
- Black or white trainers **not Converse or plimsoll style**

-
- Make-up, acrylic nails or nail varnish may not be worn to school.
-



Use of Student Photographs

During the year there will be many occasions when photographs/videos of students are taken. The school would like to use these appropriately, i.e.

- As a record of school trips/events.
- On promotional material.
- To celebrate students' work and success.

For this reason, we ask for your permission to use your child's image on the school website and other appropriate documents.

Child Protection

The school takes the issue of child protection very seriously and always takes a common sense approach when publishing the image of a student. We will never write your child's name next to their photograph. We hope you can appreciate the value of recording the students' time here at The Bridge School, but understand that you may have your reservations. If you would like to discuss this further, please contact Dominic Sunderland Head of School at d.sunderland@stmaryleboneschoolo.com

I give my permission for St. Marylebone CE Bridge School to use an image of my son/ daughter on their websites and/or other publications. I will notify the school if I wish to withdraw my consent.

Name of pupil:

(BLOCK CAPITALS PLEASE)

Name of parent/carer:

(BLOCK CAPITALS PLEASE)

Signature of parent/carer: Date:



The St. Marylebone CE Bridge School

17 – 23 Third Avenue

London

W10 4RS

Tel: 020 7563 9335

Fax: 020 7486 7139

E-mail: bridgeschool@stmaryleboneschool.com

For further information please visit our website where you can find current news, our prospectus and school policies:

www.stmaryleboneschool.com